

INSTALLATION INSTRUCTIONS
DESCRIPTION: GYTR® Blue Parts
PART NUMBER: BR8-F84AB-V0
MODEL: '18~ YZ65



⚠ WARNING

Please read and understand these instructions completely before installation to avoid possible injury, or damage to the accessory or vehicle.

WARRANTY INFORMATION:

See your Yamaha dealer for a copy of the Genuine Yamaha Parts and Accessories Limited Warranty Statement.

NOTICE:

Installation of this kit requires specialized tools, and training, as well as the Owner's Service Manual for the model. This installation should be performed by an authorized Yamaha dealer or a qualified mechanic.

DEALER OR INSTALLER:
 These instructions contain important information for future reference and *must* be given to the customer.

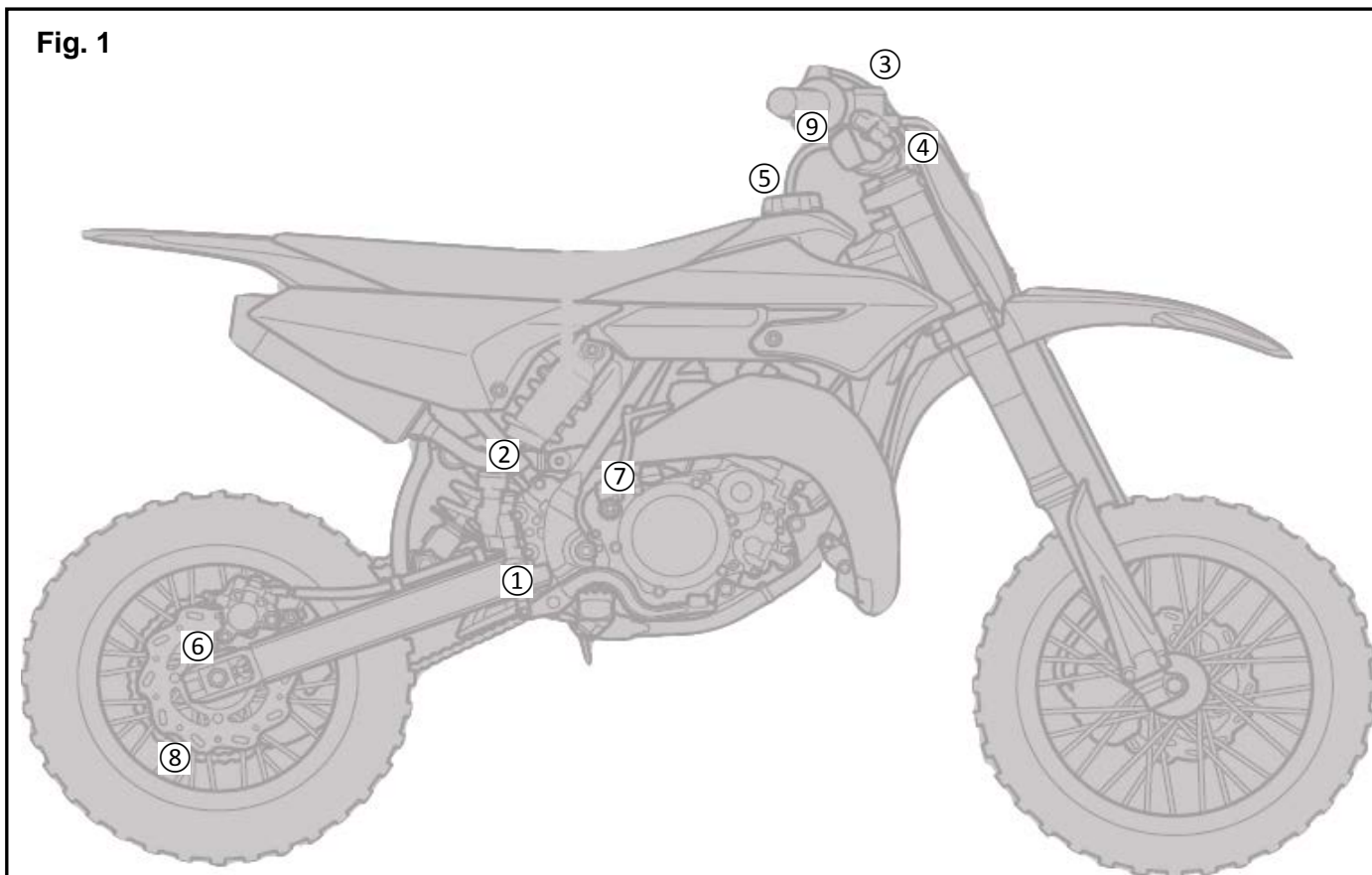
PARTS LIST:



No.	Part Number	Description	Qty
	BR8-F84AB-V0	GYTR Blue Kit	
①	*	Rear Brake Clevis and Cotter Pin	1
②	*	Rear Brake Reservoir Cap	1
③	*	Front Brake Reservoir Cap	1
④	*	Stem Nut	1
⑤	*	Gas Relief	1
⑥	*	Axle Blocks	2
⑦	*	Oil Filler Cap	1
⑧	*	Rim Lock Cover and Washer *only used on rear wheel	2
⑨	*	Clutch and Brake Mount Clamps	2

* Part supplied with kit only and not available separately.

Fig. 1



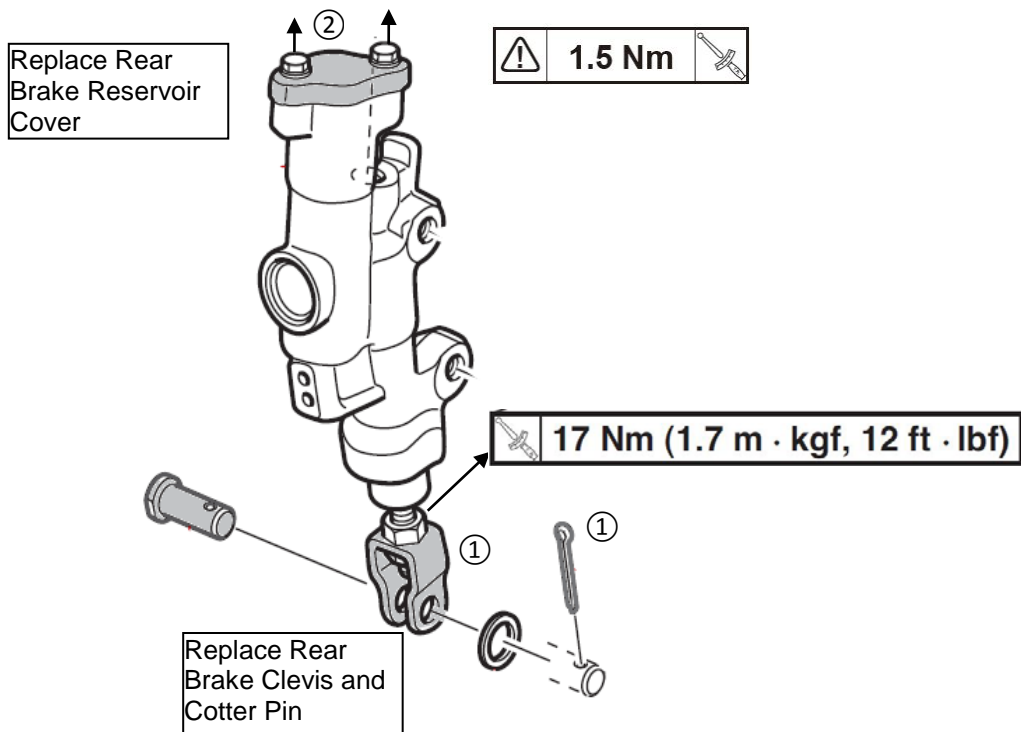
PREPARATION:

- Stand the motorcycle on a secure and level surface, and drain oil.
- Clean all mounting surfaces before beginning installation.

INSTALLATION:

Use the appropriate Owner's Service Manual for the model as a guide for disassembly and reassembly.

Fig. 2



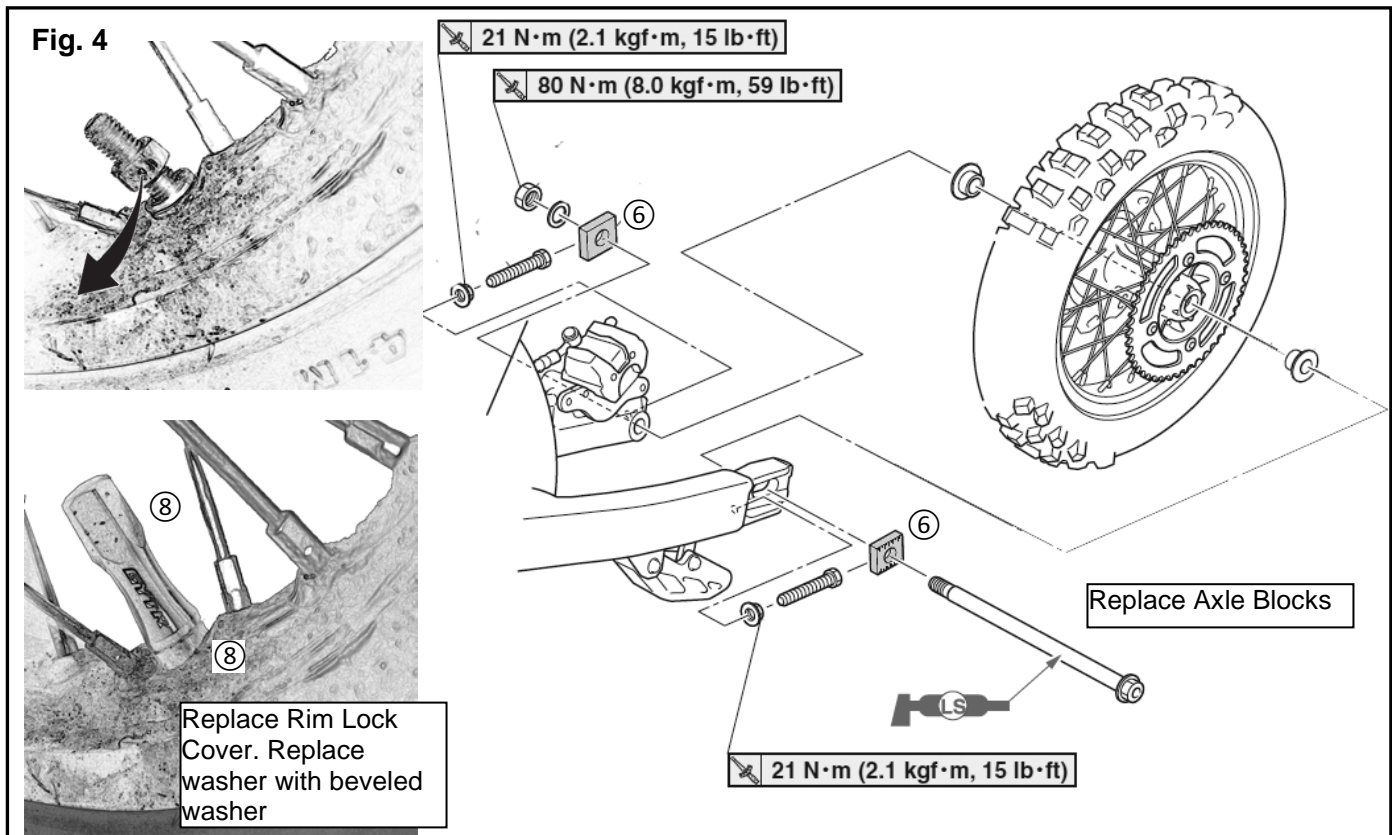
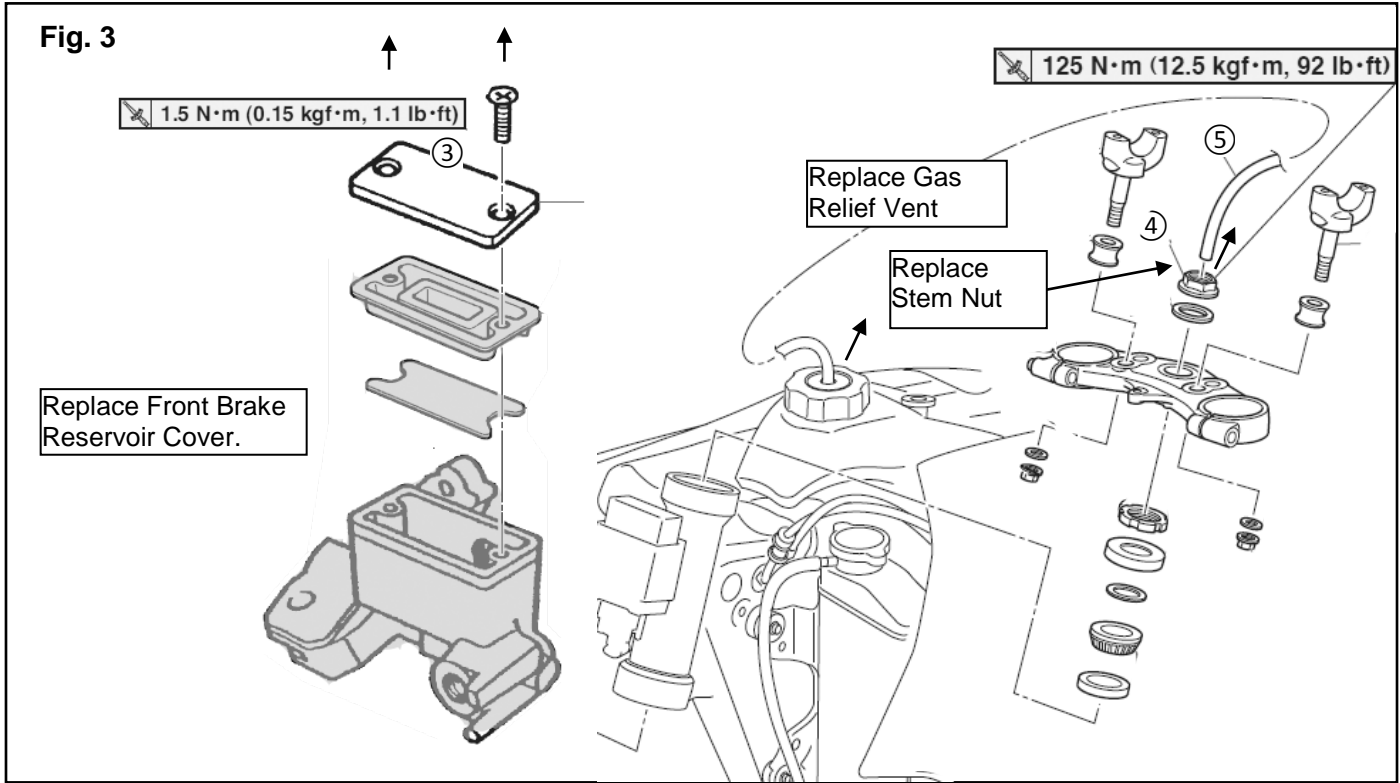


Fig. 5

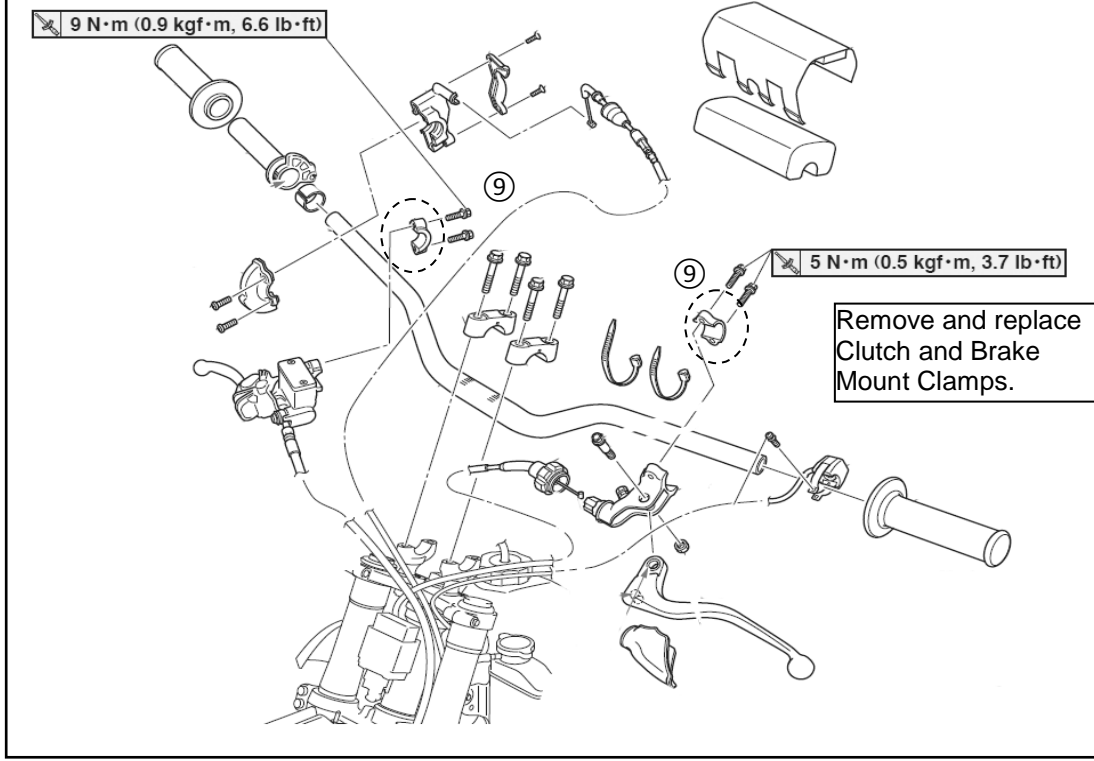
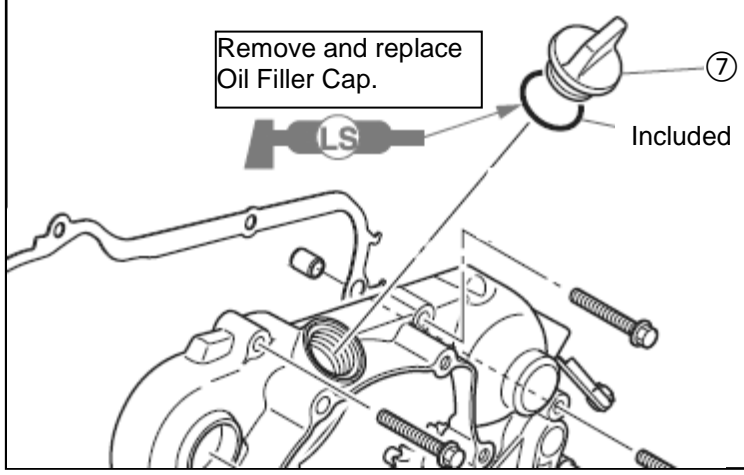


Fig. 6



MAINTENANCE:

Periodically check all hardware for tightness and re-torque as necessary.

CARE AND CLEANING:

Clean with a solution of water and mild soap. Dry with a clean, soft, cloth.

CUSTOMER SERVICE:

For further information see your Yamaha dealer.

ESTIMATED TIME TO INSTALL: 0.2 HRS